

Sediment Surveys

Arc Surveying & Mapping, Inc.

Professional surveyors with offices located in Jacksonville, Florida and San Juan, Puerto Rico. Specializing in bathymetric and topographic surveys of ports, reservoirs, and waterways throughout North and South America.

All employees of Arc Surveying & Mapping, Inc. are career surveyors. The topographic and hydrographic surveyors of Arc have well over 100 years experience. Arc has performed thousands of hydrographic and topographic surveys during the last twenty years. Arc recognizes the overall-cost benefit of technology and were one of the first surveyors to purchase GPS, multibeam swath sounders, and optical laser scanners.

- Managed by a group of experienced professionals
- Timely and efficient surveying services
- Proud to be a drug free workplace
- Quality, control, and reliability



Arc Surveying
& Mapping, Inc.

5202 San Juan Avenue
Jacksonville, FL 32210
904.384.8377 ph
904.384.8388 fax
www.arcsurveyors.com



Arc Surveying &
Mapping, Inc.

www.arcsurveyors.com

Sediment Surveying and Mapping for over Twenty Years

SERVICES TO SUPPORT YOUR NEEDS

Arc Surveying & Mapping, Inc. serves the professional surveying needs of both the public and private sectors. A production-oriented firm, committed to maintaining the highest standards of efficiency, productivity and professionalism.

Providing surveying solutions for your project needs

Arc is comprised of a group of innovative Professional Surveyors and Mappers experienced in hydrographic and topographic surveys. Qualified by government agencies including; ACOE (Army Corps of Engineers), Inland Waterway Districts, Lake Management Associations, Geotechnical experts, NOAA (National Oceanographic & Atmospheric Administration), DOT (Department of Transportation) and others, Arc meets or exceeds all known survey standards.

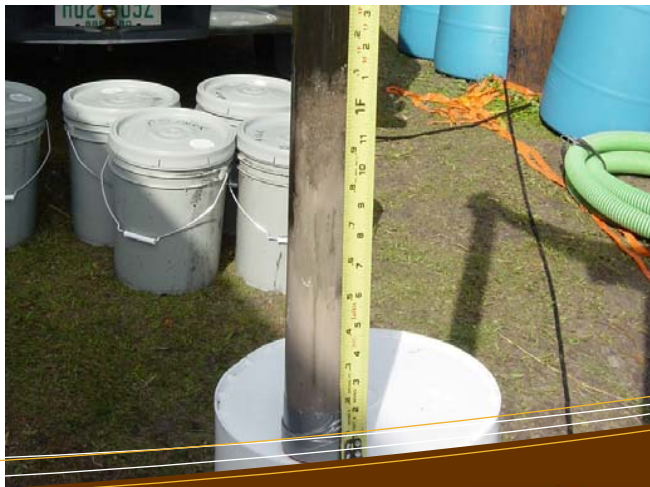
SEDIMENT SURVEY

Arc performs bottom and sub-bottom surveys which clearly identify sediments, sediment layering, and the interface with native bottom. Sediment samples are obtained during bathymetric surveys, and delivered to a laboratory of your choice.



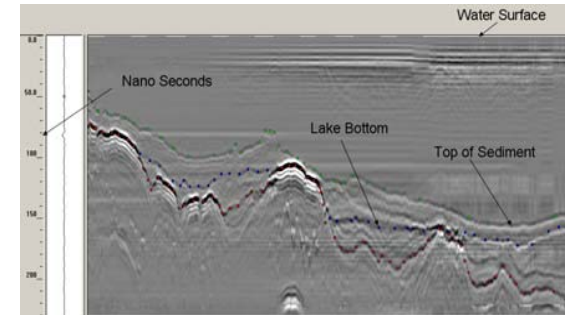
TECHNIQUES

Arc has over forty years of survey experience. Our Hydrographers are experienced in precise horizontal and vertical data collection. Best technology surveys at your project site will assure the accuracy of your subsurface data.



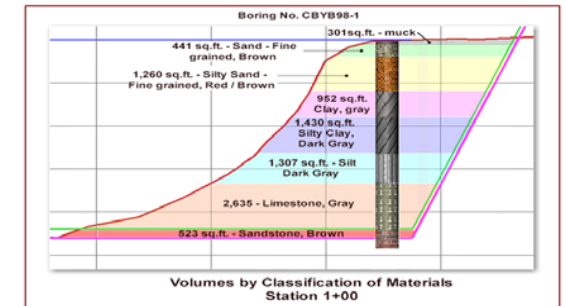
BOTTOM & SUB-BOTTOM ACQUISITION

Sophisticated modern technology such as sub-bottom profiling, dual frequency sonar, and ground penetrating radar.



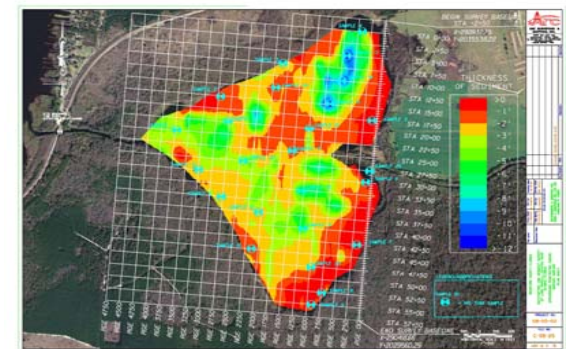
MAPS, CHARTS & QUANTITIES

Data are provided in various computer formats clearly identifying the top and bottom of sediment.



3D MODELING & EXHIBITS

Sediment data can be viewed in cross-section, plan view, isopach and 3D models.



ACCURATE - RELIABLE - COST EFFECTIVE

Individual commitment to a group effort, that is what makes a team work, a company work, a society work, a civilization work.

-OSHA / HAZWOPR CERTIFIED-
-TWC CERTIFIED-

